



**Lamington Natural History Association Inc (L.N.H.A.)**

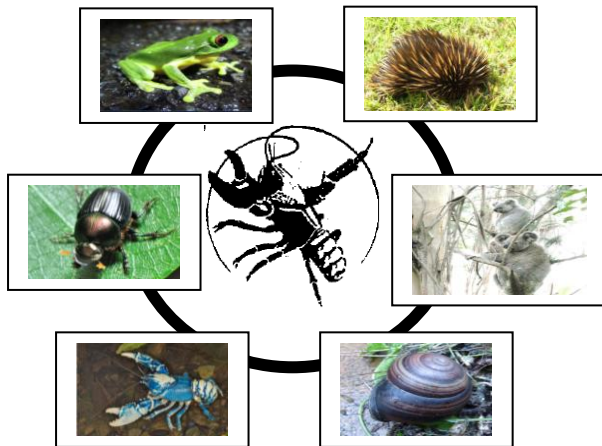
The emblem of the Association is the Lamington Spiny Crayfish (Euastacus sulcatus), endemic to Lamington Plateau.

**Membership Application Form**

Lamington National Park has a unique natural history of international value.

*Please join us*

if you wish to learn or are able to contribute to our knowledge about Lamington National Park



**Where are we?**



**LNHA Membership Form**

Name(s)

.....  
.....  
.....

Address

.....  
.....  
.....  
.....

Phone Numbers

.....  
.....  
.....

Email Address

.....  
.....



View to Mt Warning from Shipstern

## LNHA Membership Form

### Memberships

- Individual  \$20.00  
Family  \$25.00  
Student  \$10.00  
Institution  \$50.00  
Corporation  \$100.00

### Are you interested in working as an information volunteer at the National Park information counter?

You will need to be able to attend the required weekend orientation/training session at Binna Burra on a weekend yet to be determined

Yes  No   
Further Information Please

Send form and cheque to Secretary

Lamington Natural History Association  
890 Binna Burra Rd  
Beechmont 4211

Visit these websites for information.

[www.LNHA.org.au](http://www.LNHA.org.au)

[www.binnaburrallodge.com.au/Binna-Burra/about-us/Lamington Natural History Association](http://www.binnaburrallodge.com.au/Binna-Burra/about-us/Lamington-Natural-History-Association)

## Who are we? What do we do?

- Provide volunteer staff at the National Park Visitor Information Centre
- Create self-guiding brochures for walks
- Develop displays for the Visitor Centre
- Arrange quarterly guest speakers

### Previous speakers have been

Bill McDonald–  
Principle Botanist  
Queensland Herbarium

Warwick Willmot,  
Author, Geologist  
Qld. Geological Survey

Harry Hines –  
Qld Gov DERM  
Endangered Species  
Frogs

Robert Raven –  
Qld Museum Curator  
Spiders

## Who are we – our aims

The aim of the Association is to assist the Queensland Parks and Wildlife Service (QPWS) in interpreting the Park.

This aim as elaborated in the Constitution is

- "to raise funds to assist in interpreting Lamington National Park,
- to assist organisations whose principles include interpreting Lamington National Park,
- to sponsor/assist any person to participate in activities which involve interpreting Lamington National Park,
- to promote members' activities in interpreting Lamington National Park,
- to raise money for the acquisition / maintenance of land/buildings used in interpreting Lamington National Park, and
- to furnish any buildings used in interpreting Lamington National Park."